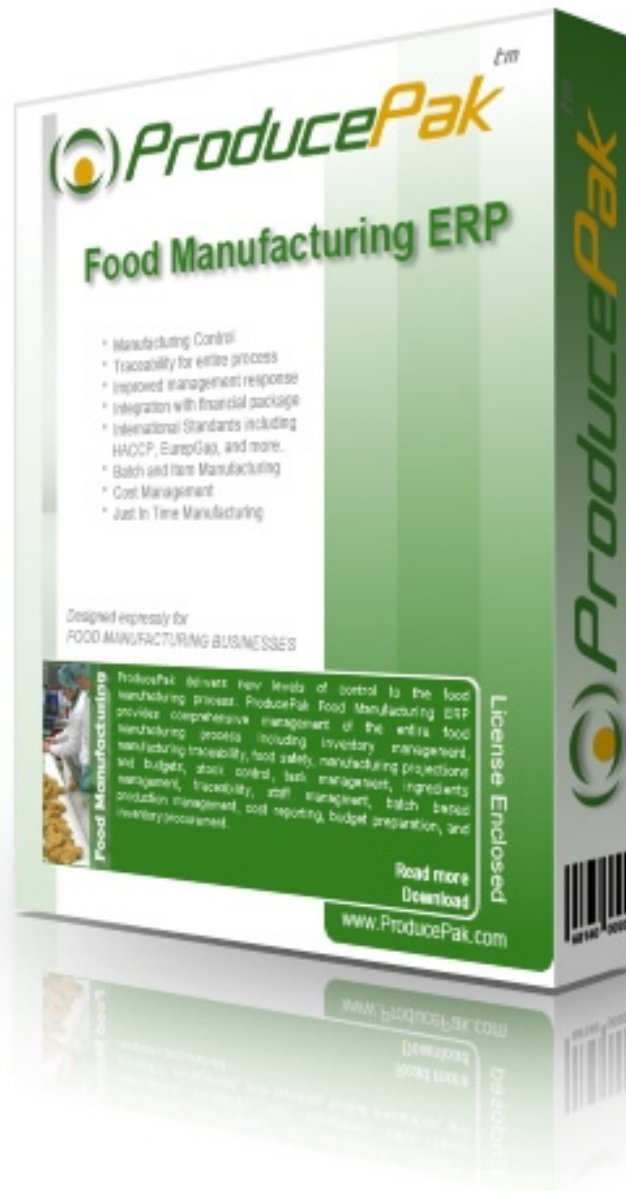


# Food Manufacturing ERP

Version 5.50 +



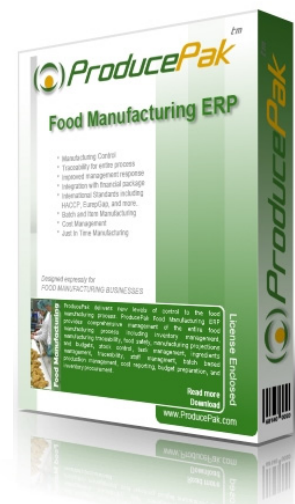
**A software solution for  
Food Manufacturing including fresh &  
frozen, processed, and meat.**



## ProducePak Food Manufacturing ERP

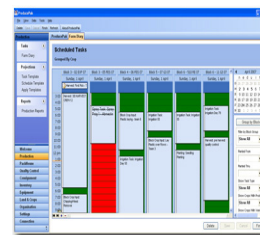
Comprehensive management for Food Manufacturers:

- Cost control
- Budget management
- Production control and planning
- Inventory control & waste reduction
- Perpetual business process and profit enhancement
- Staff accountability and management practices
- Enforce international standards and traceability in the food manufacturing process (ISO x, GlobalGAP and more)



### Production Analysis

Identify issues within the manufacturing process rapidly and take corrective action before quality or profit is effected. Monitor individual production lines and batches in detail, from activity monitoring to materials and output.



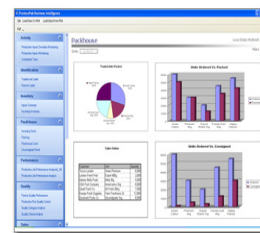
### Production Planning & Monitoring

Batch production management for BOM, management of collection and insertion of materials with automatic traceability via PC and PDA. Work order instructions provide material locations where each items barcode is scanned into a batch for maximum traceability.

 A screenshot of the software's Production Planning & Monitoring module. It displays a detailed table with multiple columns representing different stages of production, materials, and monitoring data.

### Key Performance Indicators & Analysis

Continually use live Key Performance Indicators to monitor business performance and productivity. Benchmark business divisions performance and create bonus and evaluation systems using the intuitive 'Dashboards'.



### Quality Management

Quality management has never been easier using the mobile PDA Quality Control system allows quality results to be recorded from anywhere within any factory at any time. Real time quality reporting alerts quality managers to potential quality issues quickly.



increased quality & traceability

increased profit & efficiency

<b>Module</b>	<b>Features</b>
<p><b>Manufacturing Planning Manufacturing Management</b></p>	<ol style="list-style-type: none"> <li>1. Define each Manufacturing item (traded unit) for the materials required for each finished product or part product</li> <li>2. Generate Manufacturing (bill of materials) and manage insertion of BOM items to batch via PDA and PC interface</li> <li>3. estimation of BOM requirements and material quantities based on desired batch/number of Traded Units output requirement</li> <li>4. Make necessary adjustments to the Manufacturing Bill of Materials on a batch by batch basis to allow capture of "estimated" and "actual" quantities</li> <li>5. generate batch cost estimation reports prior to Manufacturing commencement</li> <li>6. monitor the projected costs, and continually compare to the actual costs during Manufacturing to ensure strong cost control</li> <li>7. reporting functions</li> <li>8. mobile manufacturing management allows staff to barcode scan in ingredients from inventory used during the manufacturing process, the ingredients are assigned to the Production Run and cost centre</li> <li>9. associate managers for each batch process</li> <li>10. associate inventory managers for each batch process</li> <li>11. Unlimited batch creation</li> <li>12. Unlimited re-processing of batches</li> <li>13. Unlimited processes within each batch</li> <li>14. Define manufacturing processes for each product/traded unit</li> </ol>
<p><b>Monitoring &amp; Sensors</b></p> <p>(note integration with sensor systems is performed on a case by case basis and additional costs are involved, this item is not included in the standard Premium ERP system)</p>	<ol style="list-style-type: none"> <li>1. Monitor the following attributes of any Manufacturing zone during the Manufacturing process of any element of the food product or finished product: <ol style="list-style-type: none"> <li>a. Video &amp; Still Picture</li> <li>b. Temperature</li> <li>c. Humidity</li> <li>d. Water</li> <li>e. Motion</li> <li>f. 4 – 20 mA Converter outputs</li> </ol> </li> <li>2. Graph and report on sensors and historical data collection</li> <li>3. Perform historical analysis</li> <li>4. Set acceptable levels for sensor control and configure alert systems</li> </ol>

<b>Manufacturing Labour</b>	<ol style="list-style-type: none"> <li>1. associate staff on an individual or team basis to Manufacturing Runs/Batches</li> <li>2. Configure staff costs and payments</li> <li>3. report on packing labour costs</li> <li>4. export packing labour data to financial/payroll package</li> <li>5. report on PR packing costs</li> <li>6. generate staff pay slips</li> <li>7. pay staff bonuses</li> <li>8. configure staff penalties</li> <li>9. pay supervisor bonuses</li> <li>10. scan output of individual staff members using employee ID barcode and mobile PDA device</li> </ol>
<b>Quality Control Mobile Quality Control Advanced Quality Control</b>	<ol style="list-style-type: none"> <li>1. Configure unlimited Quality Control regimes</li> <li>2. Configure Quality Control for individual customer requirements</li> <li>3. configure unlimited Quality Control Criteria and individual test properties</li> <li>4. Perform QC tests on finished product</li> <li>5. Perform QC tests on materials and part batches</li> <li>6. Perform scientific (eg: microbiological etc) tests on food substances</li> <li>7. Generate QC reports by Manufacturing Run, Historical Analysis, Staff QC performance, Overall Performance, Category Performance, Criteria Performance</li> <li>8. QC Analysis</li> <li>9. QC Staff performance analysis</li> <li>10. QC correction actions reports</li> <li>11. Receive QC Alerts onscreen for Corrective actions</li> <li>12. Perform QC via mobile PDA device</li> </ol>
<b>Product Recall</b>	<ol style="list-style-type: none"> <li>1. rapid product recall management and reporting system</li> <li>2. Easy access to current and historical Manufacturing details for traceability purposes and auditing purposes</li> <li>3. Recall from either end of the supply chain including from ingredient suppliers, packaging suppliers, transport providers, production line/plant, and customer side recall</li> </ol>
<b>Finished Product Stock Control, Mobile Stock Control</b>	<ol style="list-style-type: none"> <li>1. Generate pallets as per HACCP/EurepGAP/ISO 9000/22000 standards</li> <li>2. generate pallet labels</li> <li>3. record user that created each pallet</li> <li>4. trace origin of all product allowing mixing of product from different Batches</li> <li>5. generate pallet barcode labels</li> <li>6. manage locations of all pallets (3D pallet management)</li> <li>7. Long term storage facility management</li> <li>8. use FIFO management for quality control</li> <li>9. audit trail of produce handling</li> <li>10. location tracking</li> <li>11. Automatic consumption of inventory (eg: packaging materials) upon creation of palletised product</li> <li>12. automatic assignment of inventory (packing materials) costs to cost centre and PR</li> </ol>

	<ol style="list-style-type: none"> <li>13. Use PDA and barcode scanning device to manage this process</li> </ol>
<b>Manufacturing Priority Management</b>	<ol style="list-style-type: none"> <li>1. compile packing priority from sales orders (client purchase orders)</li> <li>2. specify order priority for Manufacturing management</li> <li>3. generate printed priority management reports for manual distribution</li> </ol>
<b>Consignment &amp; Dispatch Management, Mobile Consignment</b>	<ol style="list-style-type: none"> <li>1. Consign goods to clients orders</li> <li>2. automatic order allocation and adjustments</li> <li>3. generate invoices and dispatch documentation</li> <li>4. allocate transport mechanisms and costs</li> <li>5. build orders for complex logistics management (Pallet Building functionality)</li> <li>6. price goods or dispatch on consignment (unpriced) basis</li> <li>7. automatic inheritance of pricing from initial sales order</li> <li>8. archive sales orders</li> <li>9. management of sales process</li> <li>10. mark pallets as completed/consigned/shipped</li> <li>11. record dispatch details such as temperature and dispatch docket notes</li> <li>12. Use PDA device to read barcodes during dispatch and order building process and assign selected pallets to an order</li> <li>13. use PDA device to locate and assign stock to orders</li> </ol>
<b>Sales Order Management</b>	<ol style="list-style-type: none"> <li>1. Record client purchase orders as sales orders</li> <li>2. generate sales order analysis reports</li> <li>3. manage order priority</li> <li>4. sales order search facility</li> <li>5. automatic insertion of sales order data into consignment screens</li> </ol>
<b>Inventory Management</b>	<ol style="list-style-type: none"> <li>1. used for management of Ingredients, general inventory, and Packing materials</li> <li>2. issue barcode to identify each instance of an inventory item upon delivery</li> <li>3. generate Purchase Orders to suppliers for Inventory</li> <li>4. receive inventory against existing Inventory Purchase Orders</li> <li>5. Cost of inventory recorded during entry or other NBP, inventory rejection and acceptance recording</li> <li>6. receive inventory from non Purchase Order source</li> <li>7. configure unlimited depots for the storage of inventory, with three dimensional storage capacity</li> <li>8. move inventory between different depots within the business</li> <li>9. Perform stock take by category, site, location/depot</li> <li>10. Auto stock take function</li> <li>11. Batch number management and full inventory</li> </ol>

	<p>traceability</p> <ol style="list-style-type: none"> <li>12. Multi-Site inventory management</li> <li>13. Inventory expiration management and reporting</li> <li>14. Inventory 'check-in/check-out' management for better inventory accountability</li> </ol>
<p><b>Management Reporting Dashboards KPI Monitoring</b></p>	<ol style="list-style-type: none"> <li>1. Analyse Manufacturing processes to identify new ways to improve profit and reduce waste</li> <li>2. Analyse staff performance</li> <li>3. Analyse and monitor profitability during the Manufacturing process</li> <li>4. Dashboards and KPI monitoring systems</li> <li>5. Measure the results of experimental manufacturing to perpetually improve process design, efficiency, and profitability of operations</li> <li>6. Request user defined dashboards from the ProducePak development team for experimental process improvement</li> </ol>
<p><b>Financial Integration</b></p>	<p>Integrate your ProducePak solution with a financial package such as Great Plains/Dynamics, QuickBooks or almost any locally supported system through tailored export facilities or direct integration*; by exporting data from ProducePak for import into your financial package.</p> <p>* direct integration attracts additional fees. Optional Module. Additional charge applies.</p>
<p><b>Customer Care Portal</b></p>	<p>Provides customers with online access to invoices, traceability information, and delivery/order status information.</p> <p>Optional Module. Additional charge applies.</p>
<p><b>Client Care Package</b></p>	<p>To ensure our clients receive the highest level of satisfaction and profit enhancement from ProducePak; a reports development service is offered to all Premium clients for the first 12/24 months commencing from the date of initial client deposit. This service allows our clients to request any report or chart, which is then developed as per client specifications and usually added to their system within 2 to 3 weeks. (note this option attracts additional fees depending on your region of purchase and ProducePak partner/branch).</p>

## Integration

ProducePak Food Manufacturing can be integrated with other ProducePak products such as:

- ProducePak Quality Management
- ProducePak Packhouse Management
- ProducePak Farm ERP Management

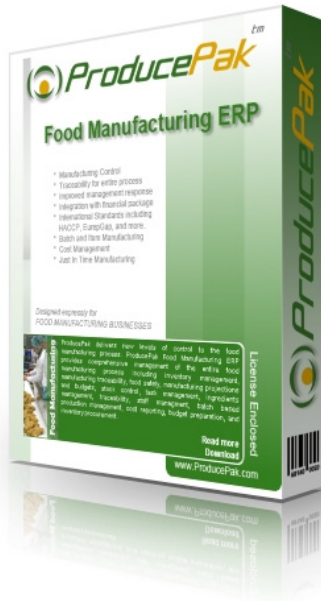
Integration with Financial packages and Payroll applications can be performed on a case by case basis to ensure a high level of solution fit.

## Summary

Implementing ProducePak results in a higher profit for the business; by providing

- comprehensive cost control
- profit control
- staff management
- traceability management
- materials management
- and manufacturing activity management

ProducePak empowers the business to continually identify new ways to improve profit through the development of new manufacturing methodologies and the ability to continually monitor and compare performance of every facet of the business.



## Call now for a demonstration

USA (646) 652-6698 UK 020 8123 2669  
Australia 03 9016 3293

Or info @ ProducePak . com to find your  
nearest ProducePak partner.

### Installation & Training Services

- Installation & Deployment
- Project Management for large businesses
- Onsite Training
- Remote Training

### Support

- Budget (Email only)
- Business Hours Phone
- 24 X 7 Phone

### Upgrades & Patches

- Subscription to patch upgrades
- Subscription to "Instant Upgrade Path"

### Consulting

- On site consulting by Farm/Packhouse solutions expert

### Software Development

- System Analysis & design
- Engineering of solutions based on client requirements
- Integration with financial packages

### System Specifications:

- SQL Database
- 3<sup>rd</sup> Party solution for backups of database is recommended
- Minimum database size 11MB
- Average client database size 20MB
- Software delivered digitally for all projects
- Development environment C# & Delphi

### Minimum Hardware Requirements

**Operating System for Server & Client PC's:** Windows XP, Windows 2003 Server, Windows 2008 Svr, Windows Vista, Windows 7 (IIS required for PDA solution)

**Server/Client:** 2 GHz+, 2GB Ram+, NIC, XVGA

**PDA:** Microsoft PPC 2003+, Windows Mobile 5+ (non .CE versions. Must be Symbol PDA if being used in Packhouse or Fodd Manuf. PDA solution. (IIS required for PDA solution)

**Printers:** any Laser or inkjet for reports, optional label printer for use in Packhouse & Food Mauf.